

WIEMERS AG

Werkzeugmaschinen + Industrieanlagen



PHV-130, PHV-160, PHV-200, PHV-250

M O D E L L E

PHV-130

PHV-160

PHV-200

PHV-250

SB-130

SB-160

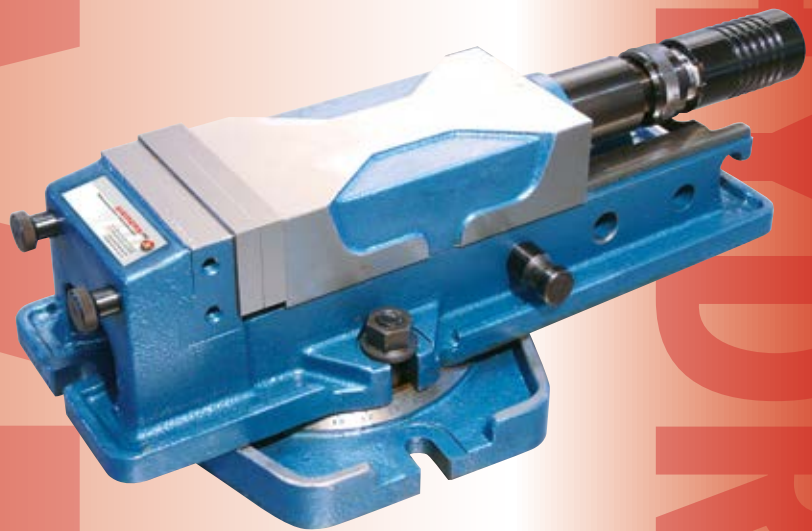
SB-200

SB-250

SB-130, SB-160, SB-200, SB-250

HYDRAULISCHER
NIEDERZUG-
MASCHINEN-
SCHRAUBSTOCK

LOCK DOWN
HYDRAULIC
MACHINE
VISE



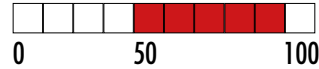
HYDRAULISCHER MASCHINENSCHRAUBSTOCK

M O D E L L E

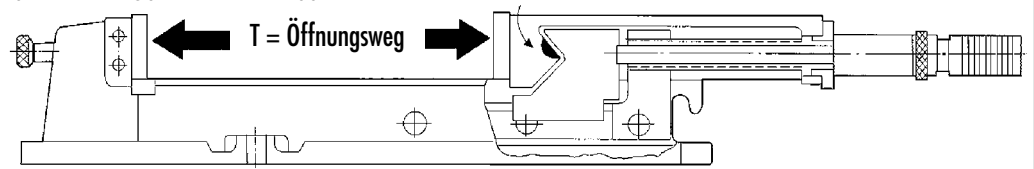
PHV-130, PHV-160, PHV-200, PHV-250



Schließkraft (KN)

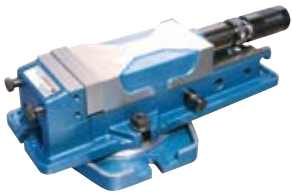


20 KN Kraftaufwendung in horizontaler Richtung erzeugen 10 KN Kraft in vertikaler Richtung

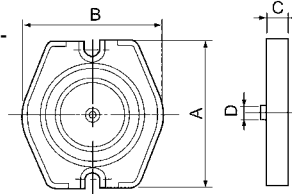


O P T I O N A L E S Z U B E H Ö R :

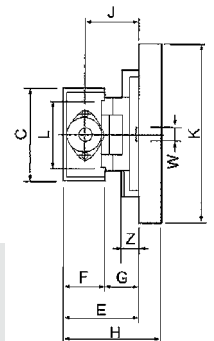
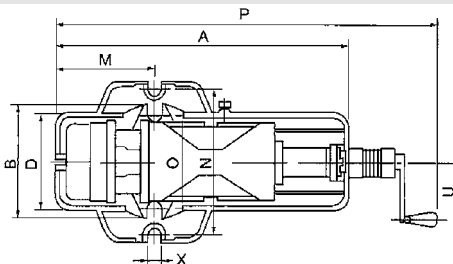
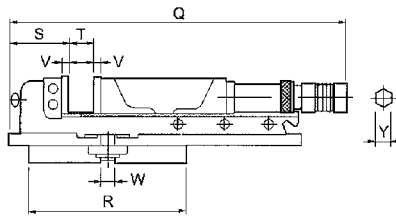
SB-130, SB-160, SB-200, SB-250



Optionales Zubehör:
1. Spezial-Schraubstockbacken (Separates Datenblatt)
2. Drehteller



Modell	A	B	C	D	N.G.
SB-130	290	260	34	16	9 kg
SB-160	340	320	39	16	15 kg
SB-200	400	360	46	18	23 kg
SB-250	460	420	50	18	32 kg



Modell	A	B	C	D	E	F	G	H	J	K	L	M	N	O
PHV-130	505	190	130	170	127	55	72	163	95	290	106	180	250	160
PHV-160	625	240	160	205	140	58	82	179	105	340	125	208	300	196
PHV-200	700	280	200	240	163	63	100	205	125	400	165	265	360	240
PHV-250	810	320	250	290	190	80	110	238	139	460	195	320	410	270

Modell	P	Q	R	S	T	U	V	W	X	Y	Z	Schließkraft	Gewicht
PHV-130	695/920	570/795	260	105	220	125	15	16	18	14	25	36 KN	36 kg
PHV-160	755/1055	640/940	320	125	300	125	15	16	18	14	27	41 KN	56 kg
PHV-200	830/1140	725/1035	365	150	300	125	18	18	22	14	36	62 KN	90 kg
PHV-250	920/1260	815/1155	420	180	340	125	21	18	22	14	36	72 KN	140 kg

WIEMERS AG

Werkzeugmaschinen + Industrieanlagen



Mergelweg 206 | 33161 Hövelhof
tel +49. 52 57. 9 38 38 70 | fax +49. 52 57. 9 38 38 79
www.wiemers-ag.de | info@wiemers-ag.de